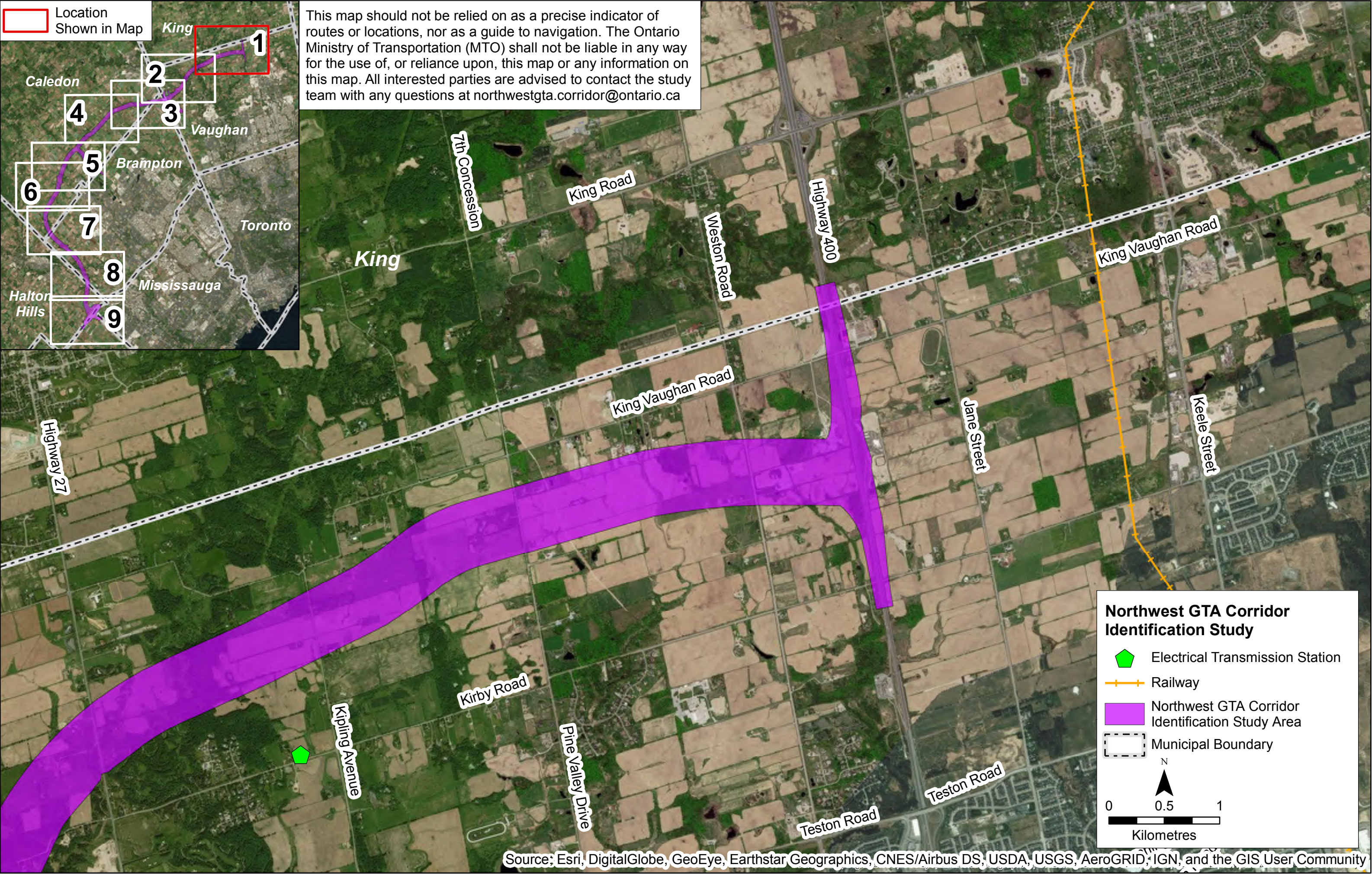


This map should not be relied on as a precise indicator of routes or locations, nor as a guide to navigation. The Ontario Ministry of Transportation (MTO) shall not be liable in any way for the use of, or reliance upon, this map or any information on this map. All interested parties are advised to contact the study team with any questions at northwestgta.corridor@ontario.ca



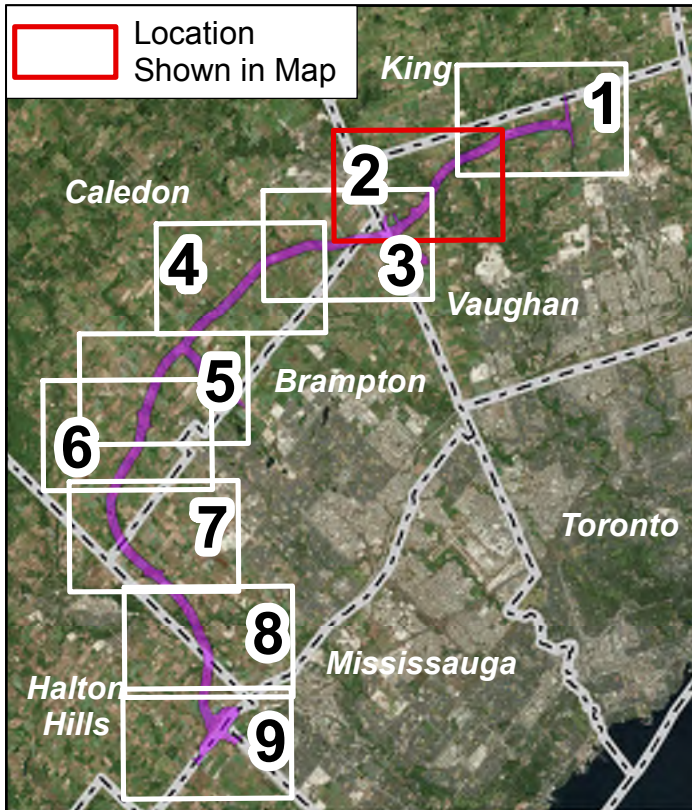
Northwest GTA Corridor Identification Study

- Electrical Transmission Station
- Railway
- Northwest GTA Corridor Identification Study Area
- Municipal Boundary

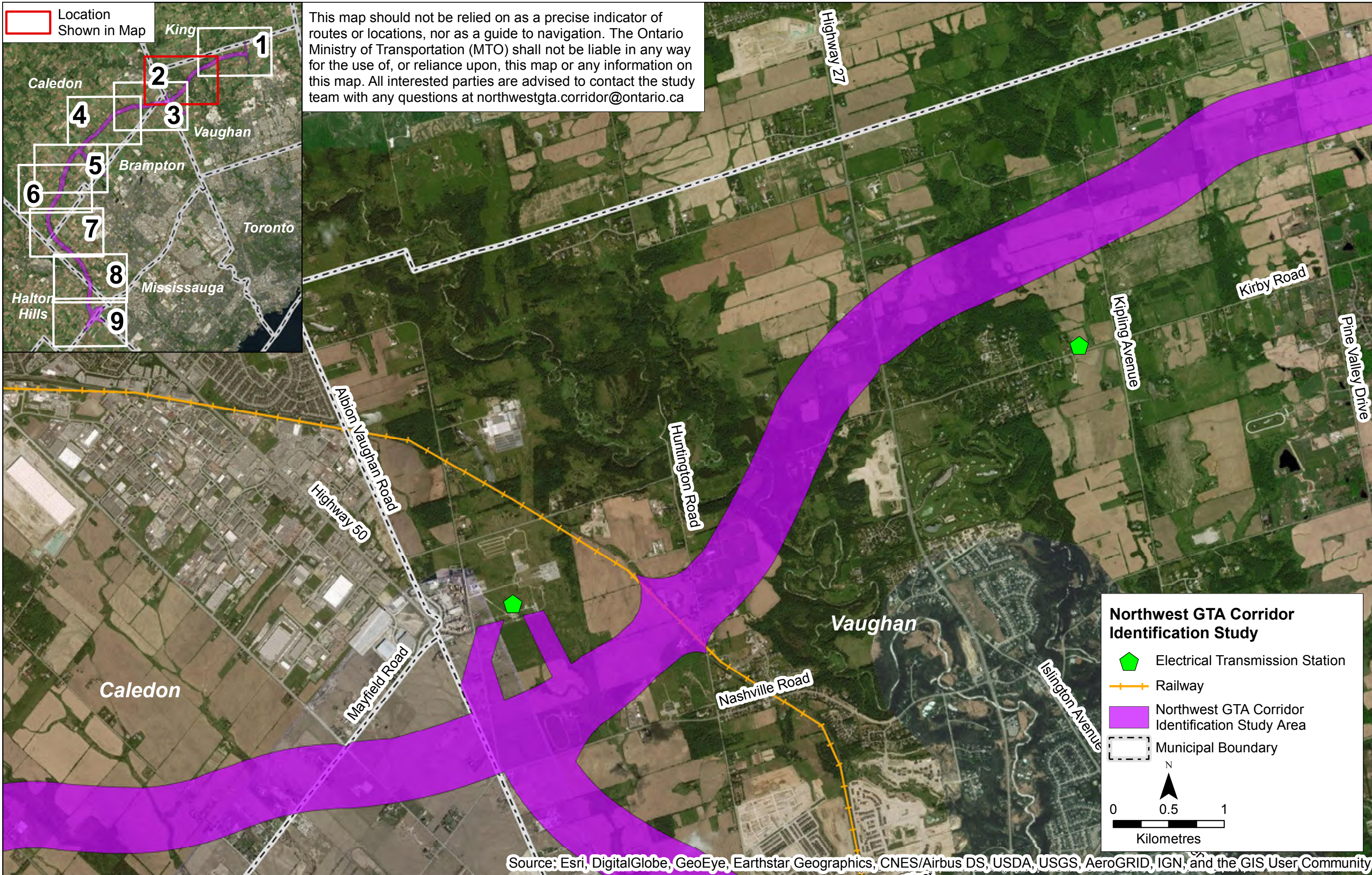
N

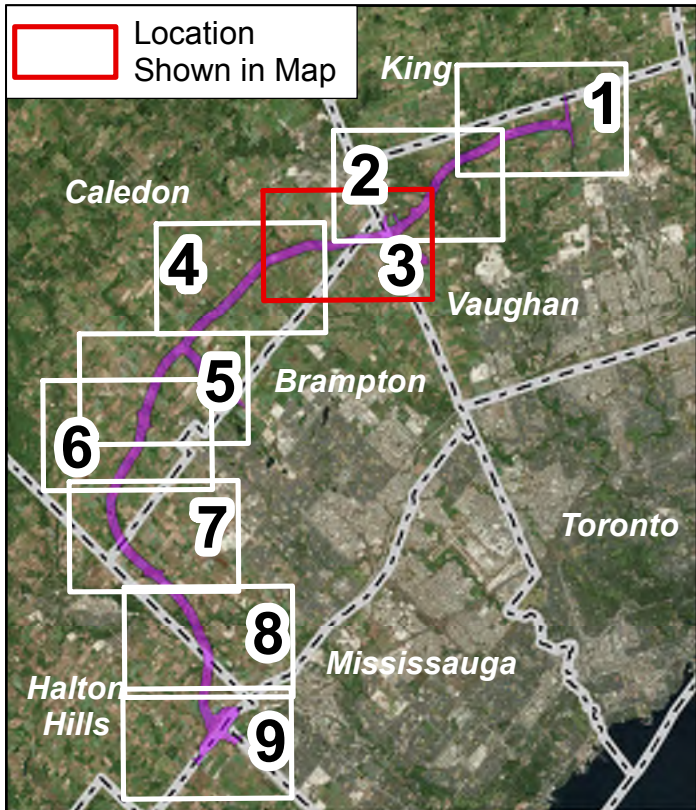
0 0.5 1

Kilometres

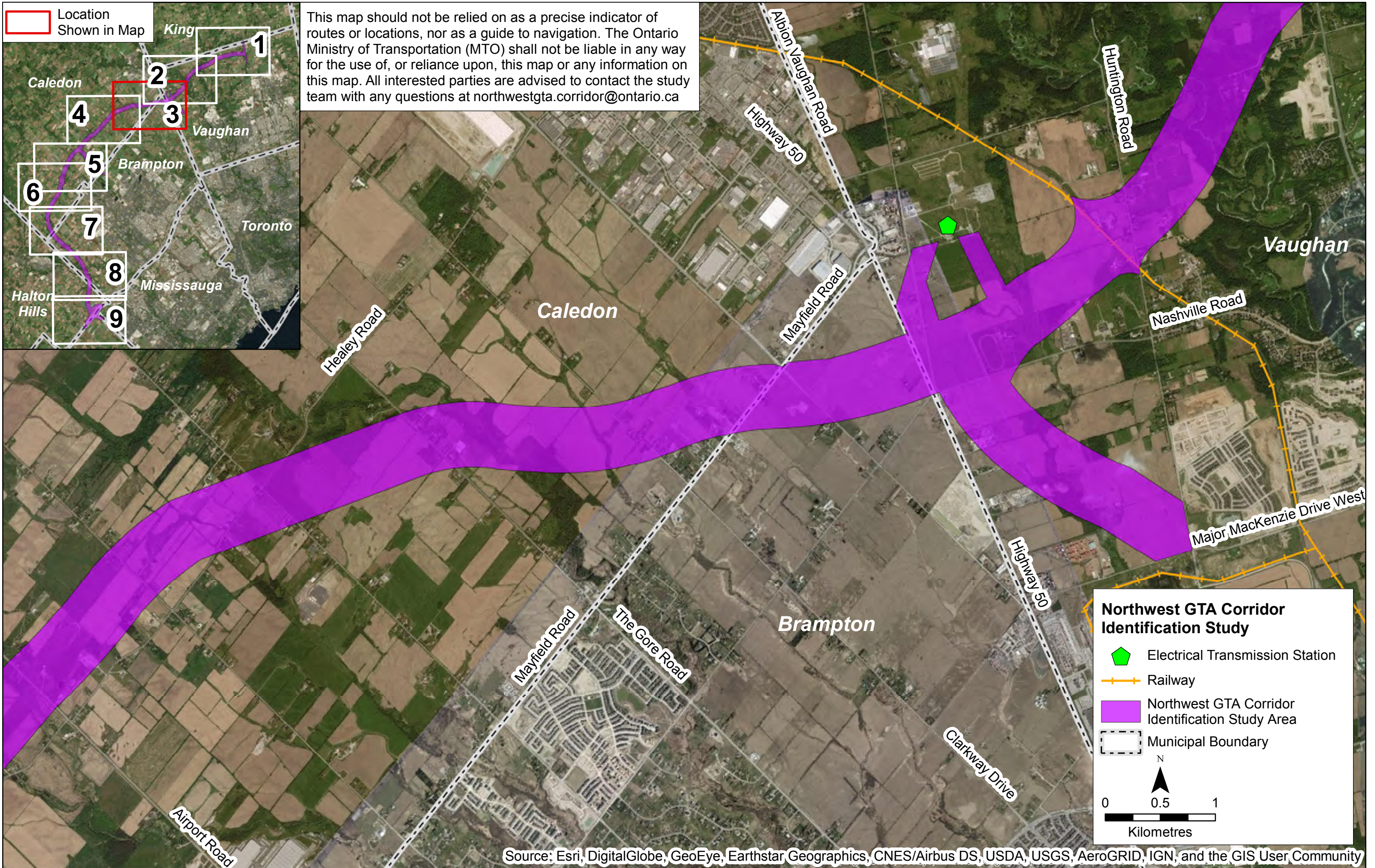


This map should not be relied on as a precise indicator of routes or locations, nor as a guide to navigation. The Ontario Ministry of Transportation (MTO) shall not be liable in any way for the use of, or reliance upon, this map or any information on this map. All interested parties are advised to contact the study team with any questions at northwestgta.corridor@ontario.ca









This map should not be relied on as a precise indicator of routes or locations, nor as a guide to navigation. The Ontario Ministry of Transportation (MTO) shall not be liable in any way for the use of, or reliance upon, this map or any information on this map. All interested parties are advised to contact the study team with any questions at northwestgta.corridor@ontario.ca



Northwest GTA Corridor Identification Study

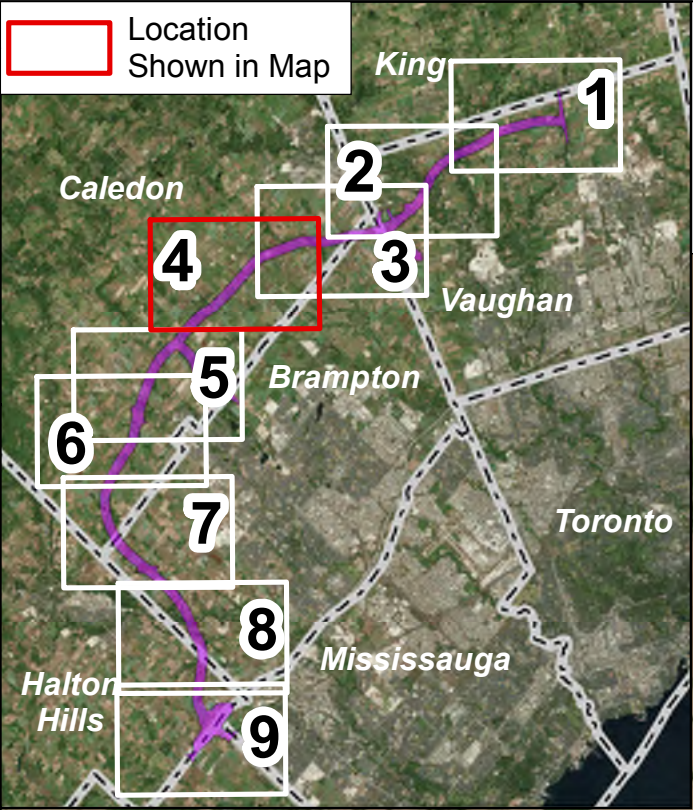
-  Electrical Transmission Station
-  Railway
-  Northwest GTA Corridor Identification Study Area
-  Municipal Boundary

N

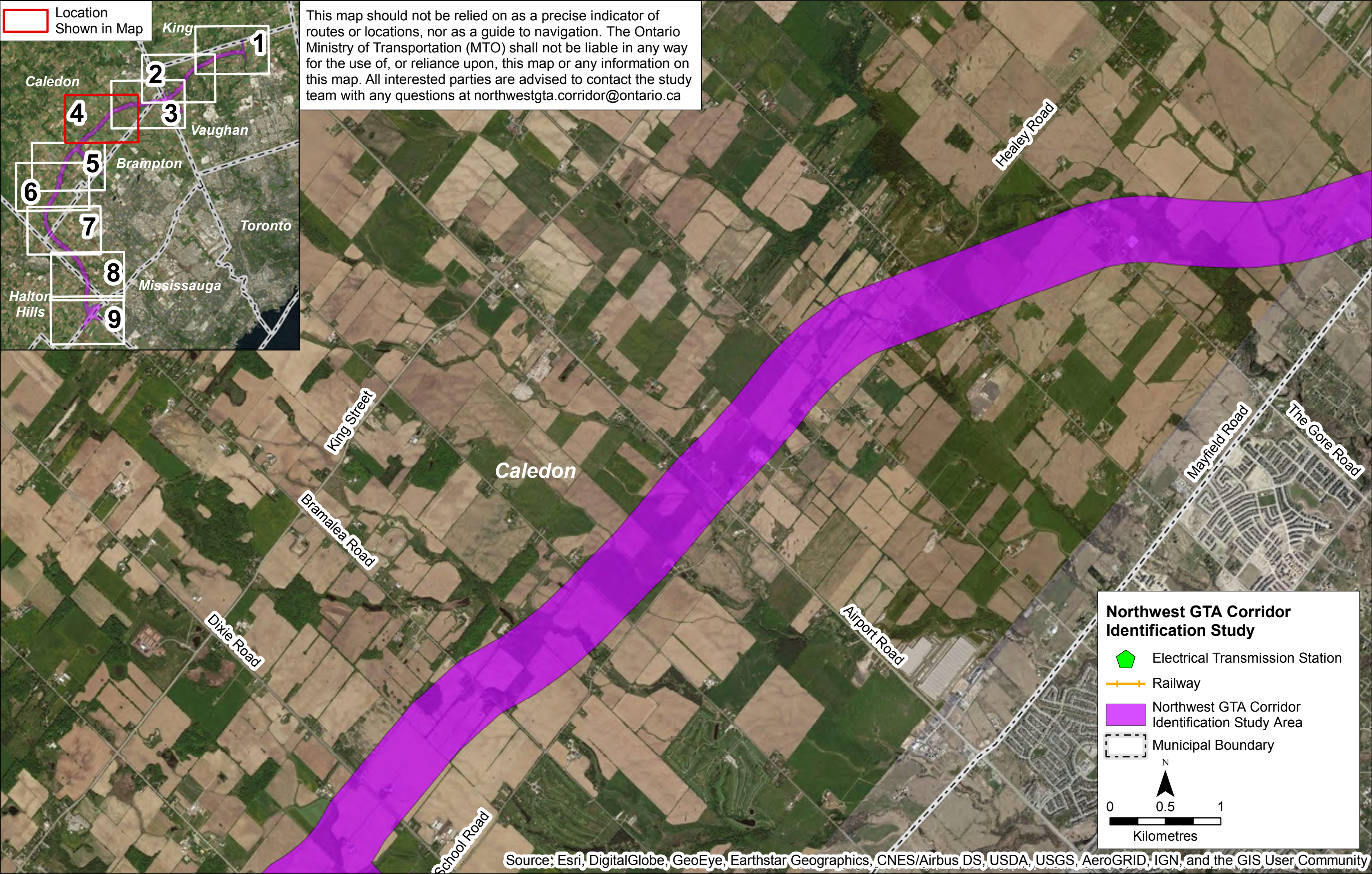
0 0.5 1

Kilometres

Location
Shown in Map



This map should not be relied on as a precise indicator of routes or locations, nor as a guide to navigation. The Ontario Ministry of Transportation (MTO) shall not be liable in any way for the use of, or reliance upon, this map or any information on this map. All interested parties are advised to contact the study team with any questions at northwestgta.corridor@ontario.ca



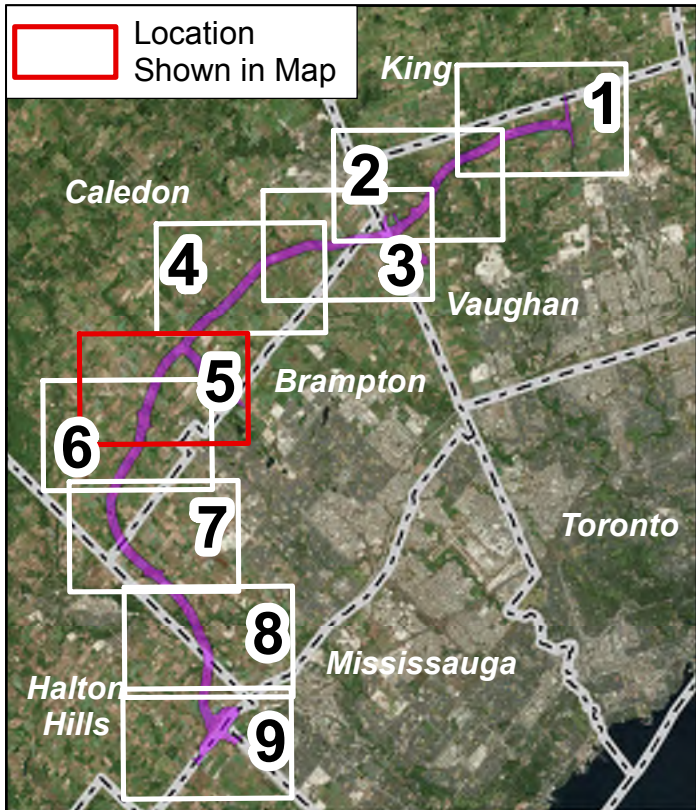
Northwest GTA Corridor Identification Study

- Electrical Transmission Station
- Railway
- Northwest GTA Corridor Identification Study Area
- Municipal Boundary

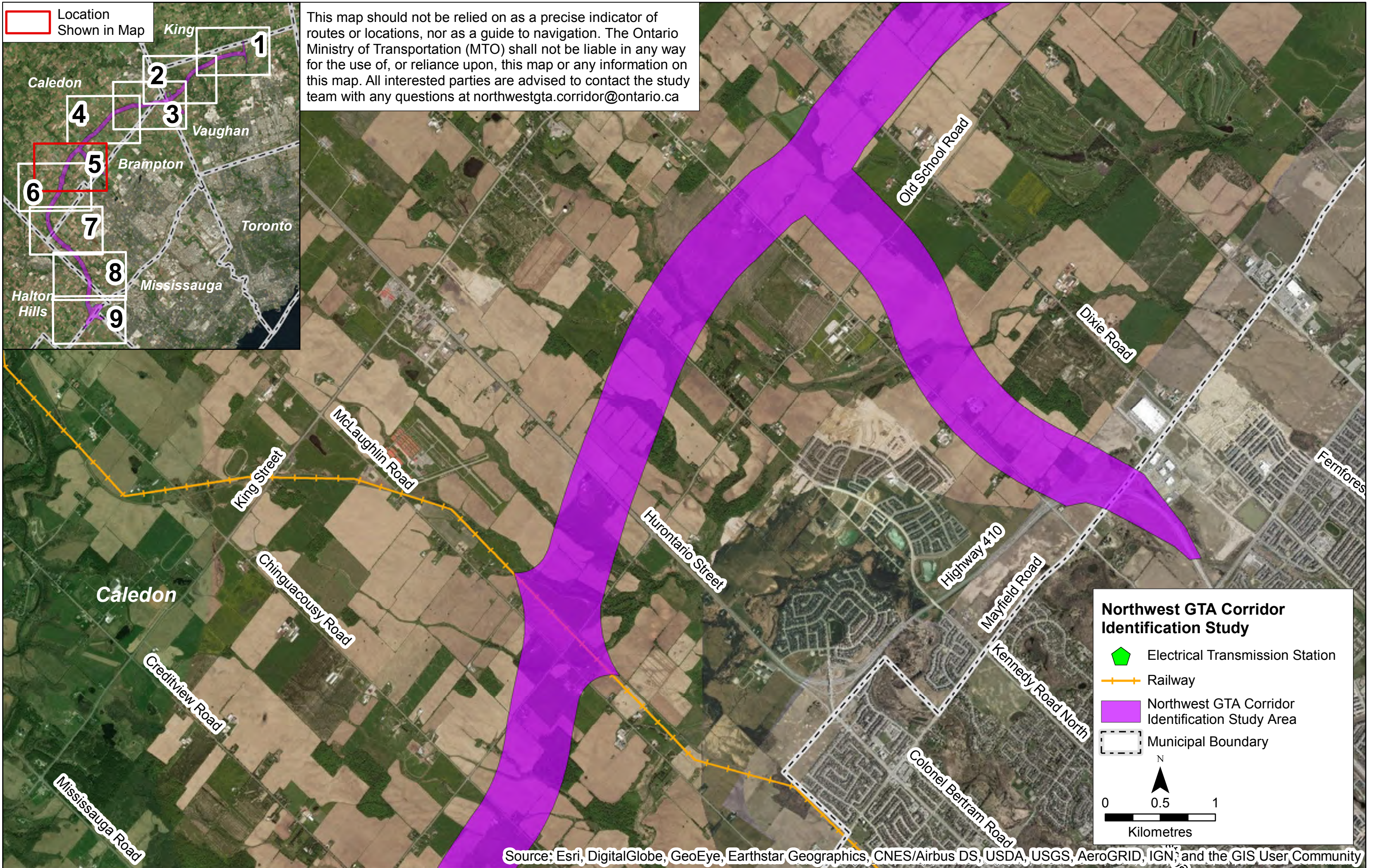
N

0 0.5 1

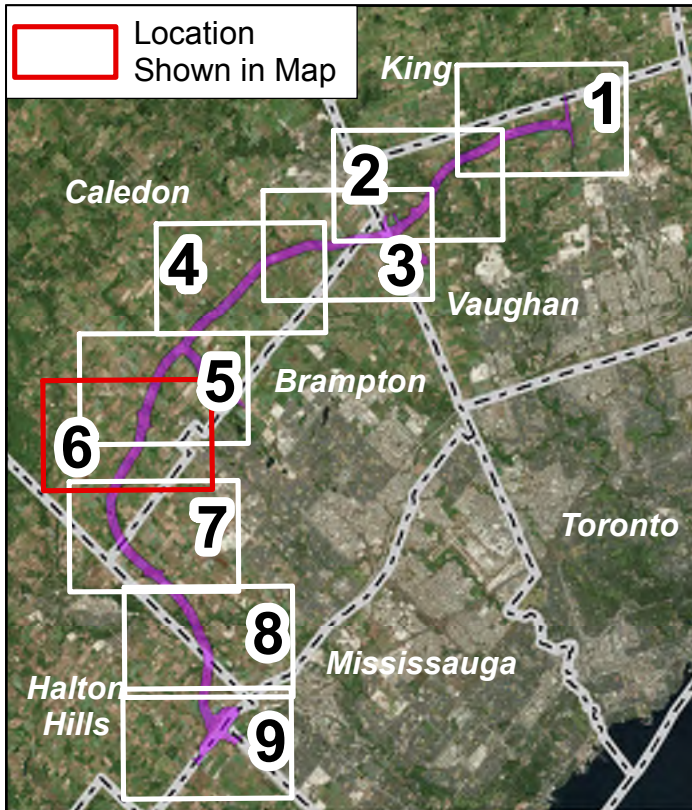
Kilometres



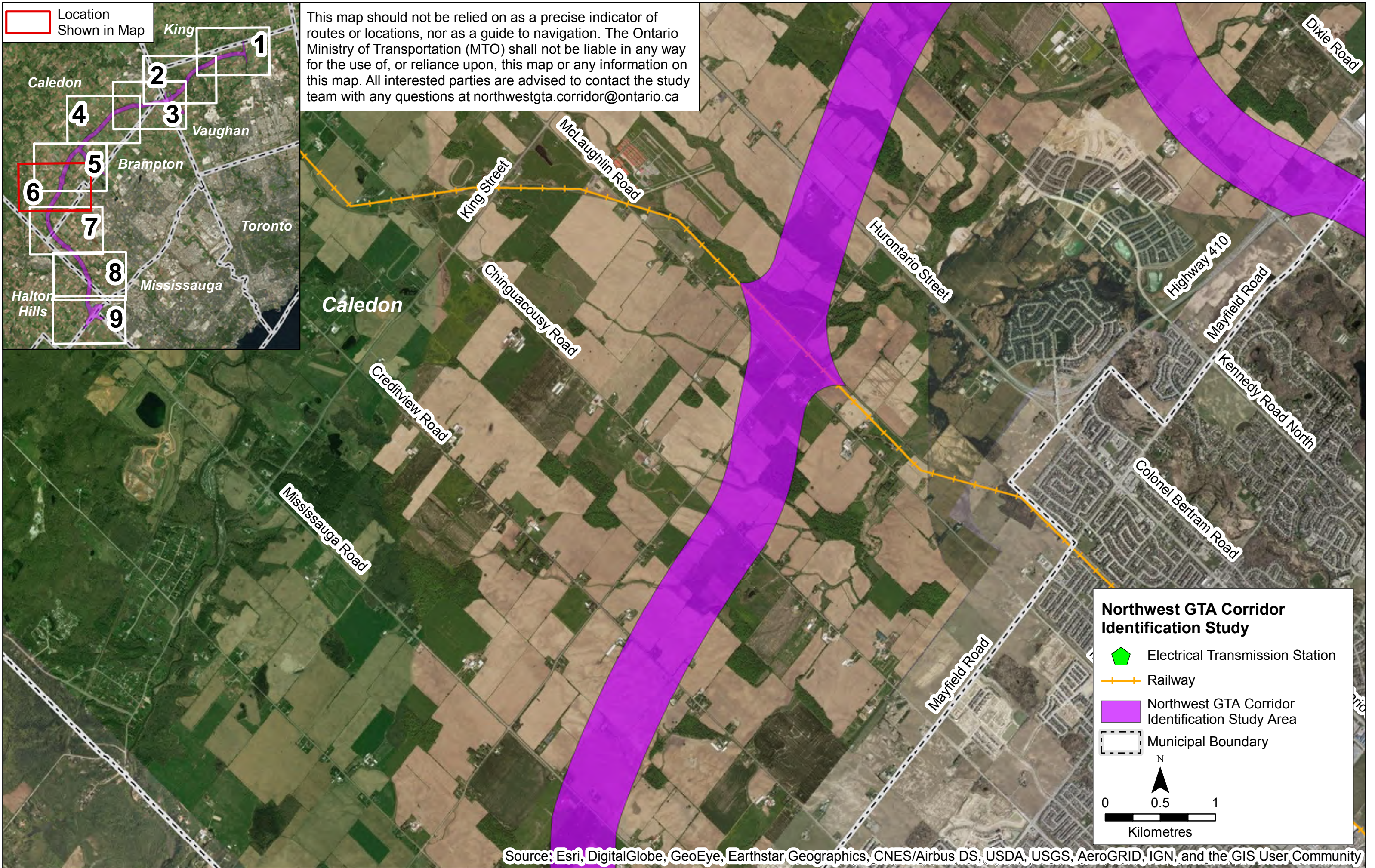
This map should not be relied on as a precise indicator of routes or locations, nor as a guide to navigation. The Ontario Ministry of Transportation (MTO) shall not be liable in any way for the use of, or reliance upon, this map or any information on this map. All interested parties are advised to contact the study team with any questions at northwestgta.corridor@ontario.ca

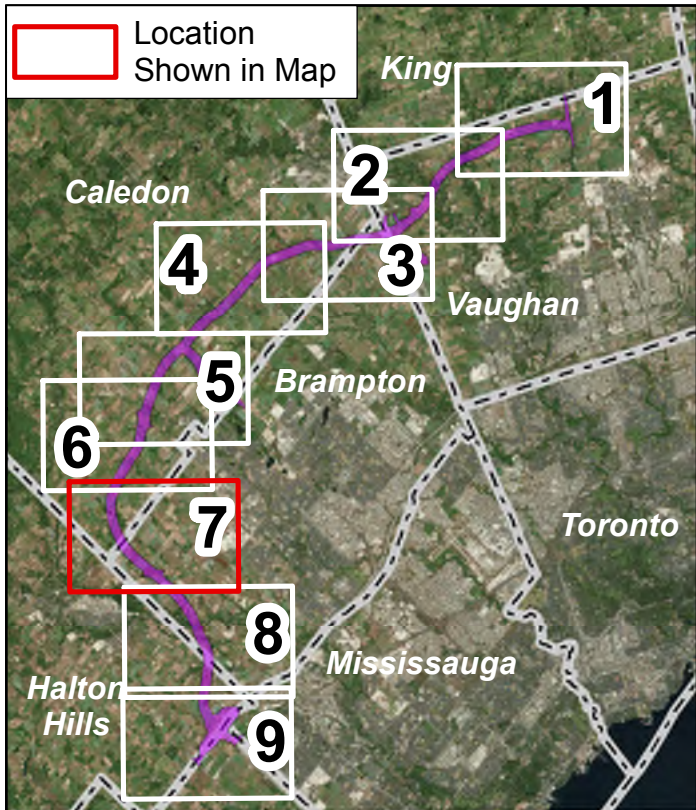


Source: Esri, DigitalGlobe, GeoEye, Earthstar Geographics, CNES/Airbus DS, USDA, USGS, AeroGRID, IGN, and the GIS User Community

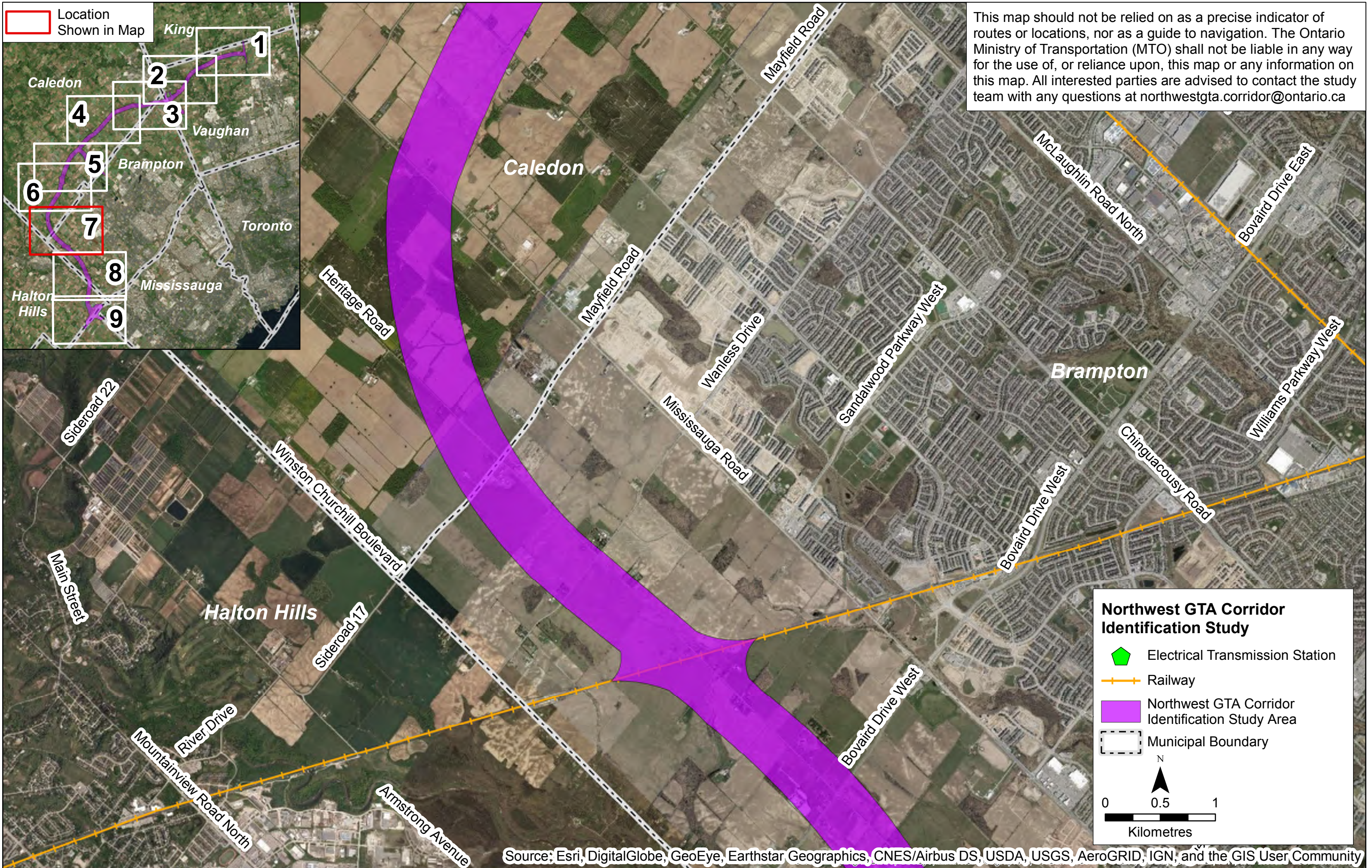


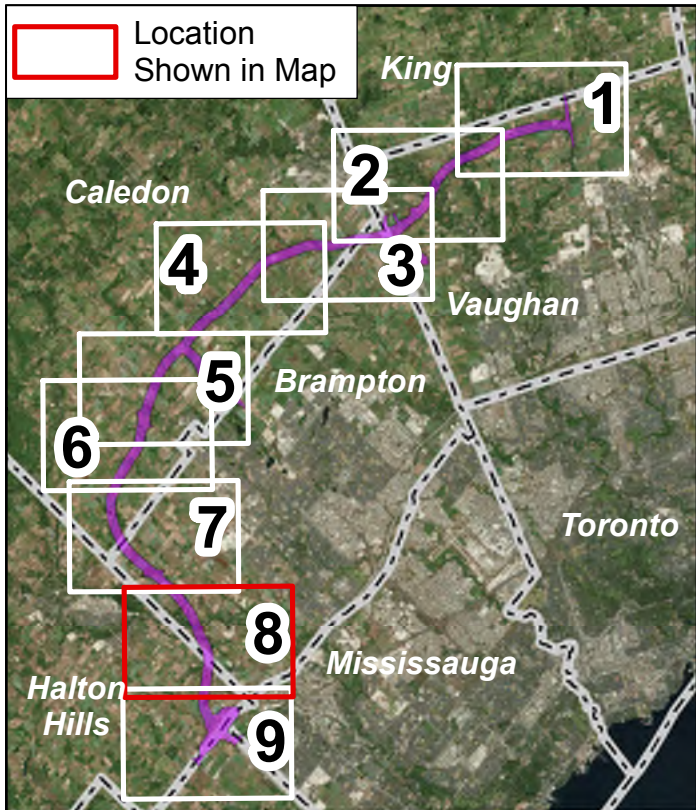
This map should not be relied on as a precise indicator of routes or locations, nor as a guide to navigation. The Ontario Ministry of Transportation (MTO) shall not be liable in any way for the use of, or reliance upon, this map or any information on this map. All interested parties are advised to contact the study team with any questions at northwestgta.corridor@ontario.ca



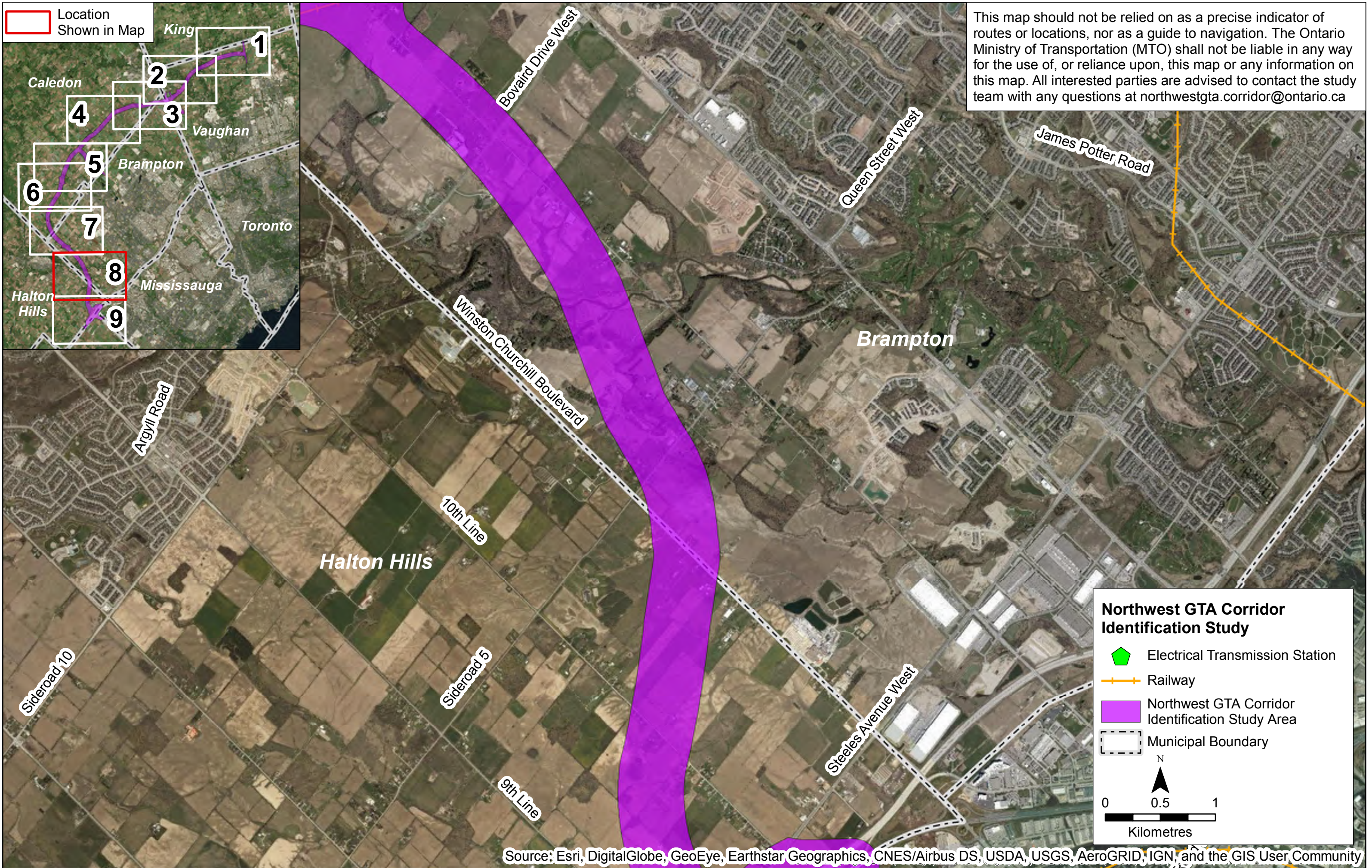


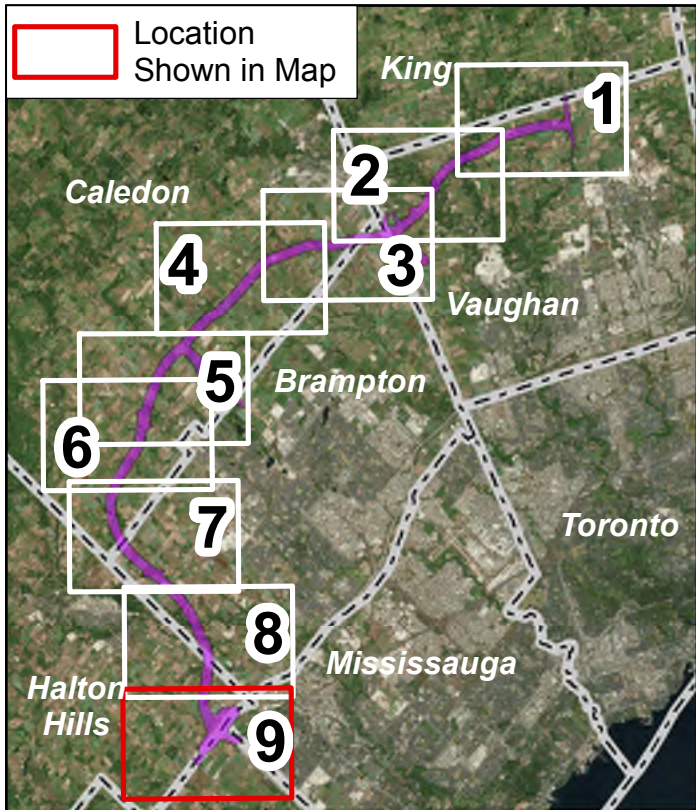
This map should not be relied on as a precise indicator of routes or locations, nor as a guide to navigation. The Ontario Ministry of Transportation (MTO) shall not be liable in any way for the use of, or reliance upon, this map or any information on this map. All interested parties are advised to contact the study team with any questions at northwestgta.corridor@ontario.ca





This map should not be relied on as a precise indicator of routes or locations, nor as a guide to navigation. The Ontario Ministry of Transportation (MTO) shall not be liable in any way for the use of, or reliance upon, this map or any information on this map. All interested parties are advised to contact the study team with any questions at northwestgta.corridor@ontario.ca





This map should not be relied on as a precise indicator of routes or locations, nor as a guide to navigation. The Ontario Ministry of Transportation (MTO) shall not be liable in any way for the use of, or reliance upon, this map or any information on this map. All interested parties are advised to contact the study team with any questions at northwestgta.corridor@ontario.ca

