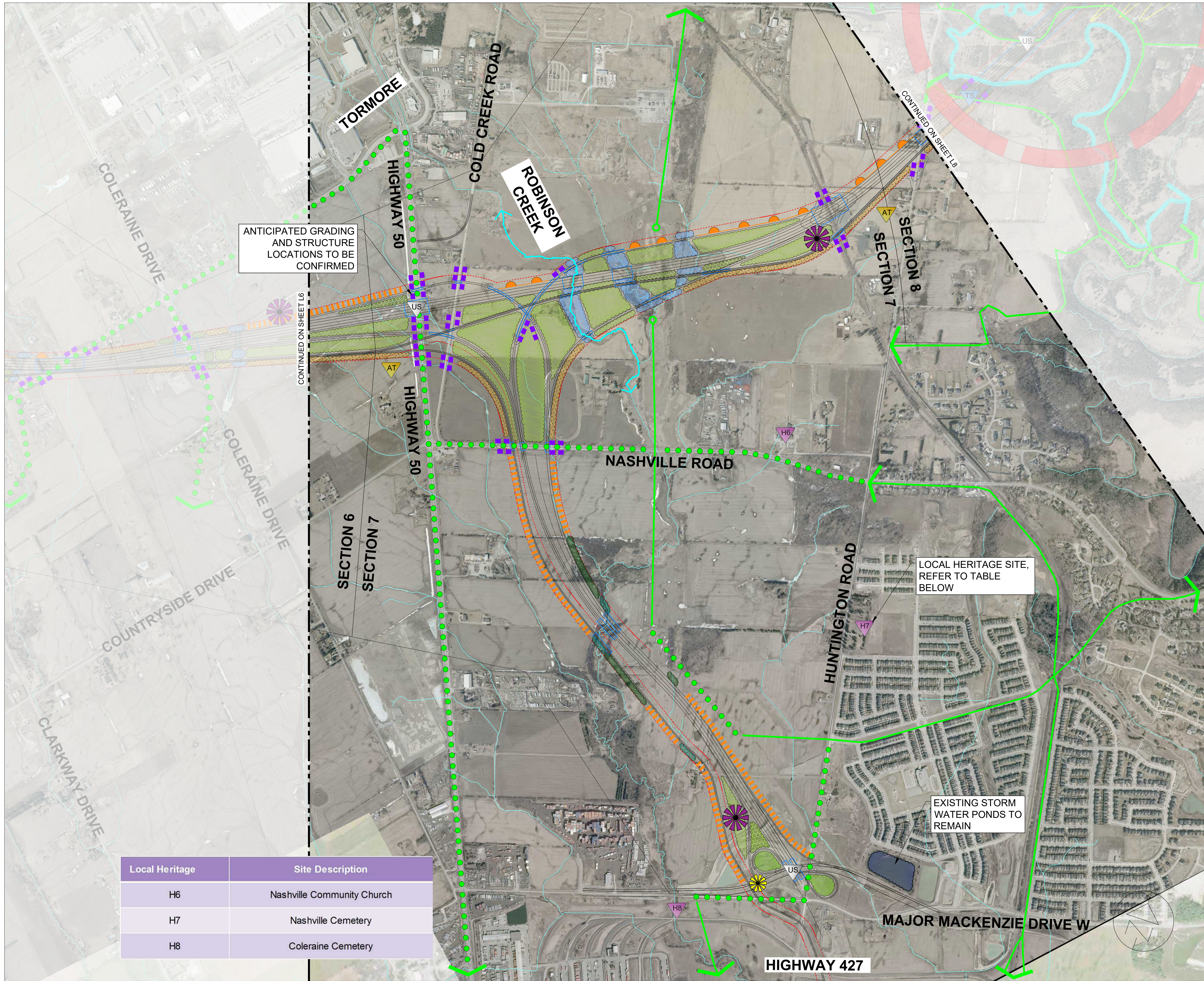
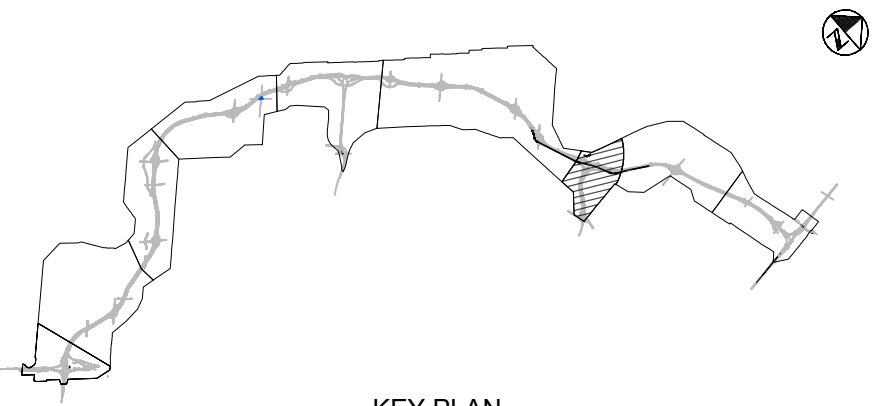


DRAWING: C:\USERS\CAMH072550\CORP\APPDATA\LOCAL\TEMP\ACIPUBLISH\_20776\STRAW MODEL-WSP.DWG  
LAYOUT TAB: L7  
REVISED BY:  
LAST SAVED: 05/25/2021 Time: 03:44:47 PM  
DRAWN BY:



Local Heritage	Site Description
H6	Nashville Community Church
H7	Nashville Cemetery
H8	Coleraine Cemetery



- LEGEND:
- PRELIMINARY HIGHWAY AND TRANSIT CORRIDOR RIGHT-OF-WAY (ALIGNMENT TO BE CONFIRMED)
  - ENHANCED LANDSCAPE PLANTING
  - ENHANCED LANDSCAPE PLANTING - LOW GROW
  - ENHANCED LANDSCAPE PLANTING - DRAINAGE CHANNEL
  - REFORESTATION PLANTING
  - RURAL BUFFER PLANTING
  - WETLAND PLANTING
  - RIPARIAN PLANTING
  - STORMWATER MANAGEMENT LANDSCAPE PLANTING
  - VALLEY RESTORATION / NODE OF INTEREST
  - REGIONAL GATEWAY
  - COMMUNITY GATEWAY
  - GRADING REQUIRED
  - WINDSCREEN
  - WILDLIFE CROSSING
  - DENSE VISUAL VEGETATION SCREEN
  - BANK STABILIZATION
  - PROPOSED MUNICIPAL ROAD REALIGNMENT
  - PROPOSED MUNICIPAL TRAIL
  - EXISTING MUNICIPAL TRAIL
  - UNDER STRUCTURE TREATMENTS (VISIBLE DRIVING UNDER BRIDGE)
  - TOP OF STRUCTURE TREATMENTS (VISIBLE DRIVING OVER BRIDGE)
  - ANTICIPATED TRANSIT STATION ARCHITECTURAL TREATMENT \*TRANSIT STATION LOCATIONS TO BE CONFIRMED
  - LOCAL TOURISM
  - LOCAL HERITAGE

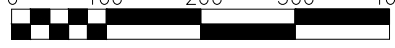
PLAN IS PRELIMINARY AND SUBJECT TO CHANGE.

01	20/05/21		PRELIMINARY CVP	
NO	Date	By	REVISIONS	MANU CAD



TITLE  
GTA WEST  
HIGHWAY AND TRANSIT CORRIDOR  
COMMUNITY VALUE PLAN  
ALTERNATIVE S7-14

Scale  
1:8000



Drawing NO  
SHEET L7 OF L9